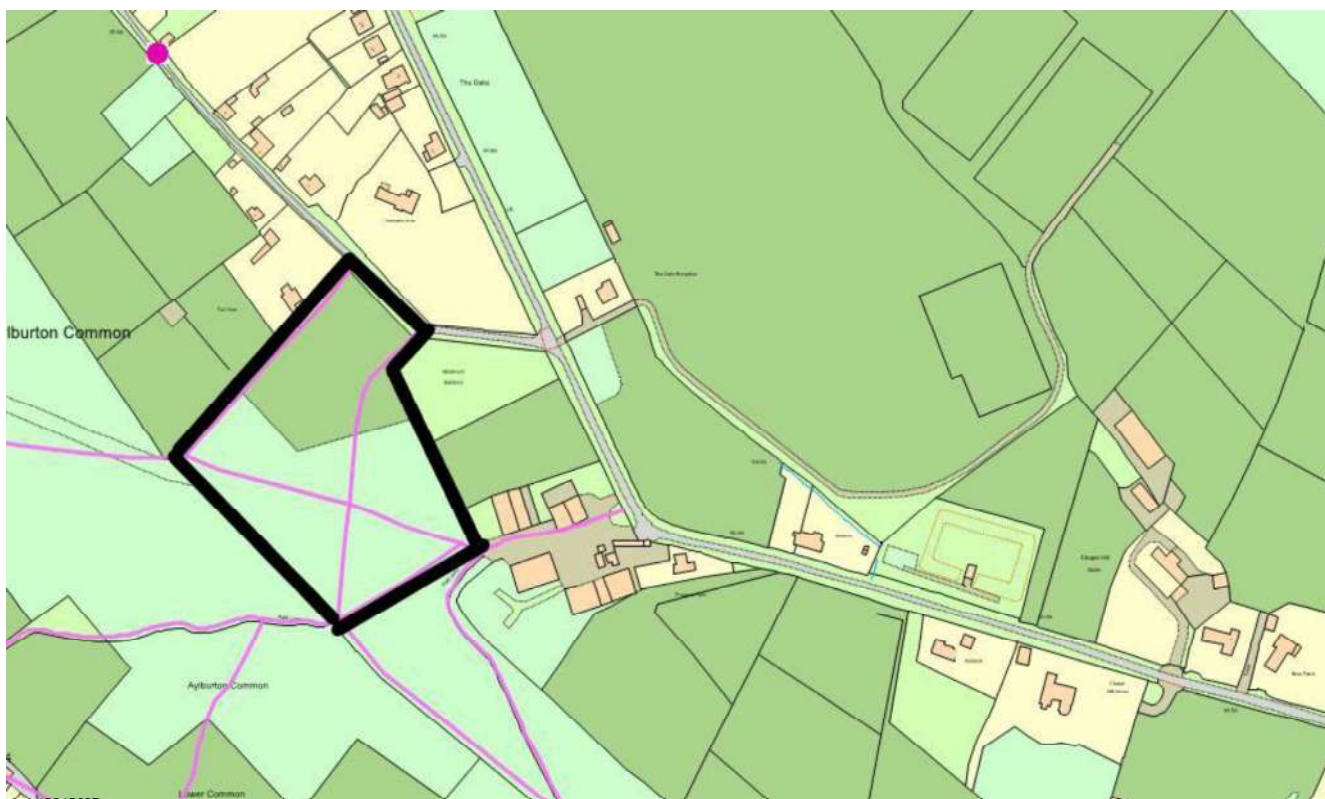


AYLBURTON PARISH COUNCIL

BRIEF FOR UPPER COMMON RECREATION GROUND MAINTENANCE 2022-24



Aylburton Parish Council takes pride in maintaining the Upper Common Recreation Ground and is seeking a contractor to carry out this work for three years (2022, 2023 and 2024), consisting of the areas marked on the map within this briefing pack. For clarity, further maps are available at the end of this document, and here is a link to a Google Maps pin on the location: <https://goo.gl/maps/GH6RJDxAesbTf9h9>

Tasks

- For three years, from April to October inclusive (7 months), mowing and strimming the area outlined in black on the above map, including mowing the pathways through the copse/bracken areas at the rear of the site.
- 14 cuts during the growing season, to be carried out twice monthly. No collection of clippings required.
- Grass cutting must include the trimming/strimming to the edge of trees, fences, benches and other obstacles of a permanent nature.

Please refer to our Terms and Conditions below for more information.

Terms and Conditions

The following will form part of the contract:

1. In the event of rain, a planned cut may be postponed to the next dry day.
2. In the event of the 14 cuts not being completed (for example, due to a wet summer), the contractor will only charge for the number of cuts completed.

3. Additional cuts may be requested through the Parish Clerk and arranged by agreement with the contractor.
4. All activities must be carried out in a conscientious and consistent manner without causing avoidable obstruction or annoyance to the public.
5. To ensure plant health and longevity, any daffodils etc should not be strimmed or mowed until their foliage has **completely** died down and dried up.
6. If the contractor anticipates any problems in meeting the terms of the contract for reasons beyond their control, the contractor must advise the Parish Council in advance of the circumstances so that a mutually acceptable course of action can be agreed.
7. Work will be subject to regular inspection by the Parish Council to ensure the contractual obligations have been satisfied. Any violation of the terms of the contract will be subject to rectification within 14 calendar days of its observation being communicated to the contractor. If problems are not rectified to the satisfaction of the Parish Council may terminate the contract without further notice. This will be done in writing to the contractor.
8. The successful contractor may be asked to meet with a councillor / the clerk on site for a short meeting before each growing season commences in order to discuss any specific requirements (which will be in line with duties described above).
9. In the event of early termination of the contract by the Council, the contractor may lodge an appeal, in writing, to the next scheduled meeting of the Council.
10. The contractor may terminate the contract at any time during its duration by giving six clear weeks' notice to the Parish Clerk. In the event of early termination by the contractor, the contractor will be liable for any difference between the old contract costs and any new contract costs (if greater). The appointment of any new contractor will be at the sole discretion of the Parish Council.
11. The appointed contractor will be solely liable for any damage to any machinery owned or hired by them, and for any damage caused by them to any property of the Council or residents of the parish, including fences, curbs, etc.
12. The contractor must indemnify the Council against any liability arising out of or in connection with the execution of the contract.
13. The contractor must at all times maintain their equipment/machinery in a safe operating condition. All operatives must be adequately trained in the operation of the equipment/machinery and each operative must hold any relevant, valid licence(s), if applicable.
14. All operatives must be fully briefed on the terms of the contract in so far as the non-financial responsibilities are concerned.

15. The contractor must carry out appropriate risk assessments prior to acceptance of the contract. Such risk assessments must be made available to the Parish Council on request.
16. Invoices should be submitted on a monthly basis to arrive by the 5th of the month following the activity. Payment will be made within 30 days of receipt of invoice, unless the invoice is in dispute.
17. The contractor must ensure that they are conversant with the areas requiring mowing before submitting a tender:

Tenders

Bids for the completion of this work should include:

- an order of costs over the next three years
- details of your experience of similar work, especially recreation grounds
- a note of insurance cover and previous experience
- any comments or queries on the above brief

Bids should be returned before **1 pm on Tuesday 14th December** to Meg Humphries, Parish Clerk at aylburtonclerk@outlook.com, or by post to:

Parish Clerk
Aylburton Parish Council
6 Court Road
Lydney
Gloucestershire
GL15 5SY

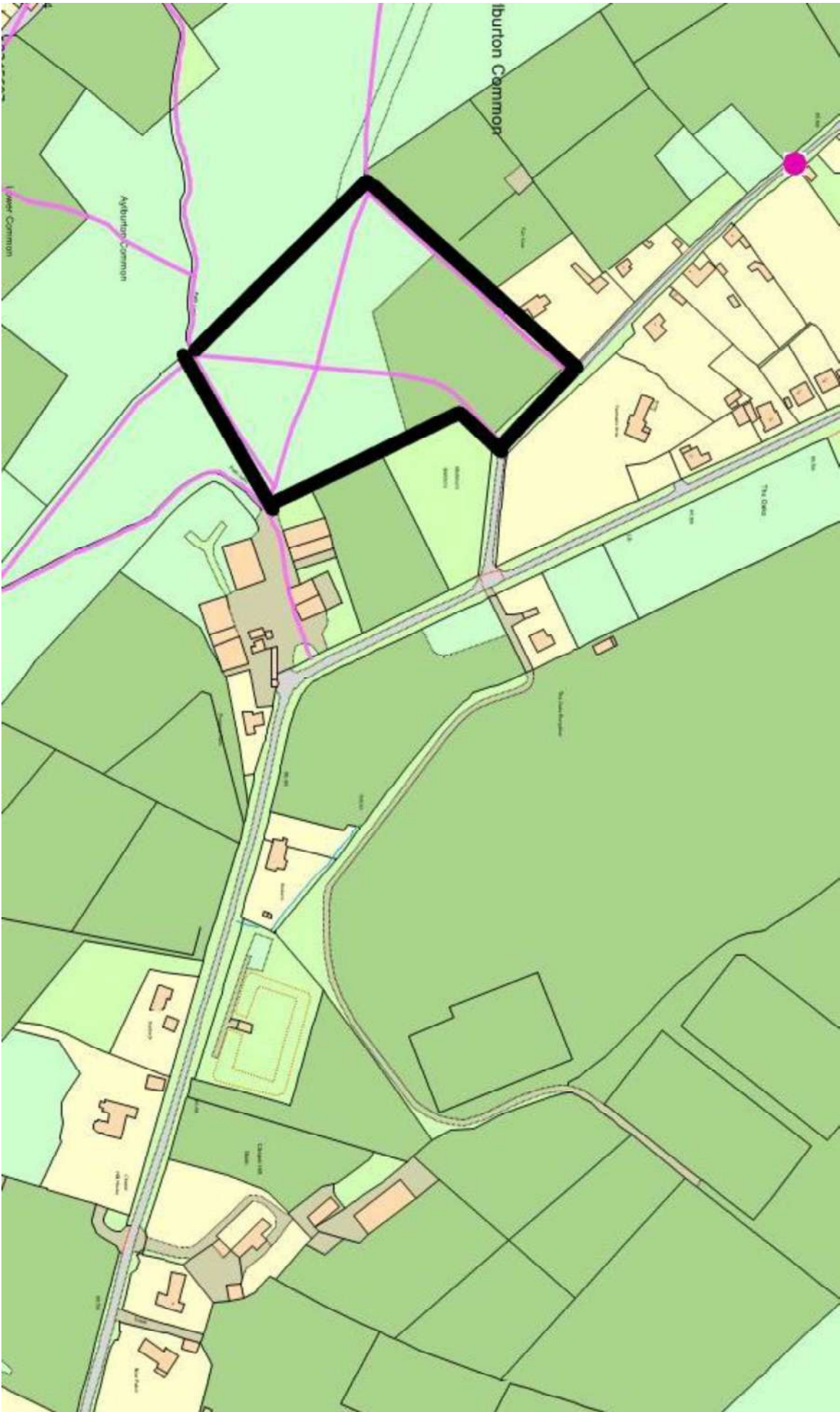
Contact

The area is fully open to the public, so you are very welcome to visit independently. Please do not hesitate to contact the council if you have any queries.

Many thanks,

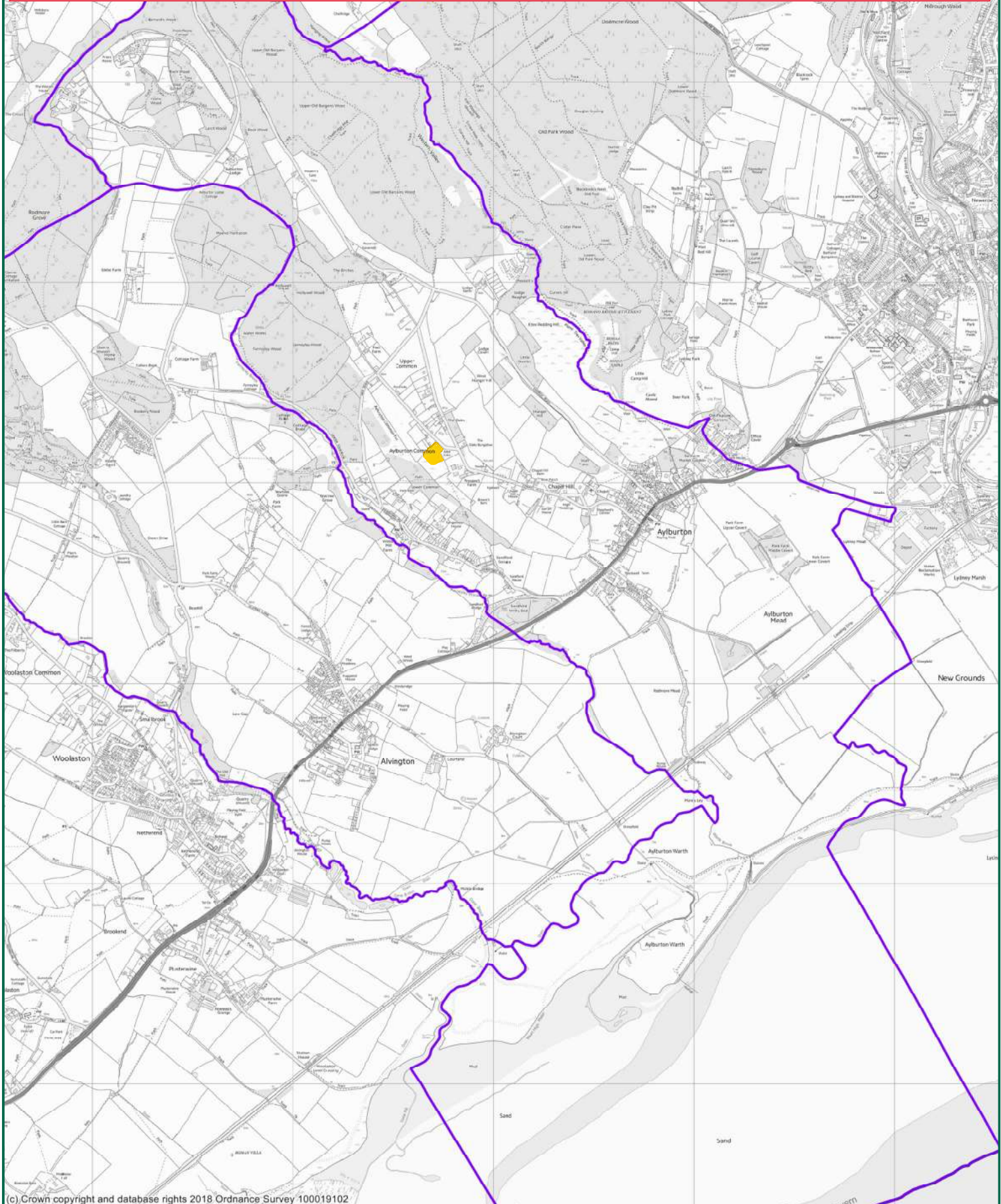
Aylburton Parish Council

OVERLEAF: 3 maps showing location of the site.





Map 2: Upper Common



(c) Crown copyright and database rights 2018 Ordnance Survey 100019102



Aylburton Parish

Scale: 1:17500

17 October 2018



(c) Crown copyright and database rights 2018 Ordnance Survey 100019102